

Port Marine Safety Code & Ship Port Interface

David Snelson

Past Chief Harbour Master, Port of London

The Exam Question:

- Requirements and duties of the Harbour Authority under PMSC
- How do they affect ships and the Mariner?

PLA Jurisdiction



95 miles: W London to the outer Estuary

About the PLA

- The statutory harbour authority for the Port of London
- A self financing, public trust
- Statutory duties along 95 miles of the tidal Thames include:
 - Facilitating navigational safety
 - Managing/protecting aspects of the environment
 - Promoting use of the Thames
 - Working with Stakeholders
- Co-ordinating the operation of the Port
- Not a dock operator

Three Ports in One

Teddington to
Putney



Putney to
Thames Barrier



Thames Barrier
to Estuary



Accountability

- Duty Holder
- Assignment of Executive and Operational duties
- Designated Person

- Mariners can have confidence the HA are taking this seriously

Key measures for compliance

- Formal safety management system
- Assessment of risks and hazards

- Mariners should have confidence that hazards are mitigated – VTS, Charting etc

Port Control Centre Gravesend



VTS Radar – not very useful here!

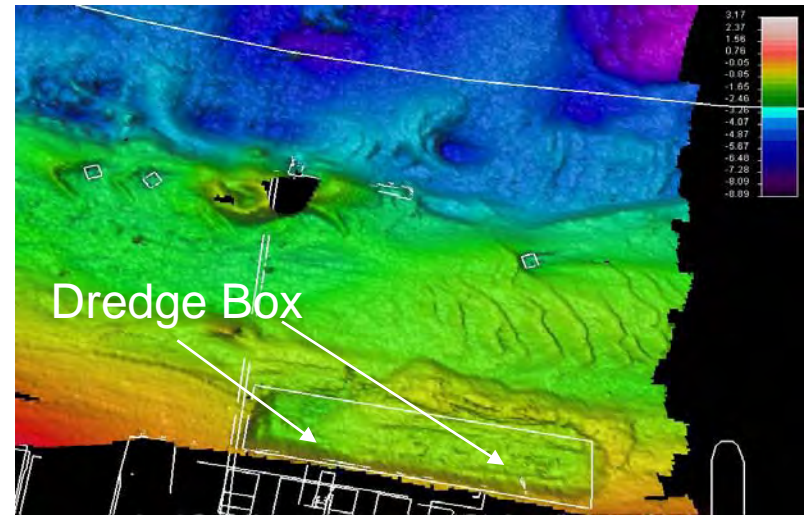
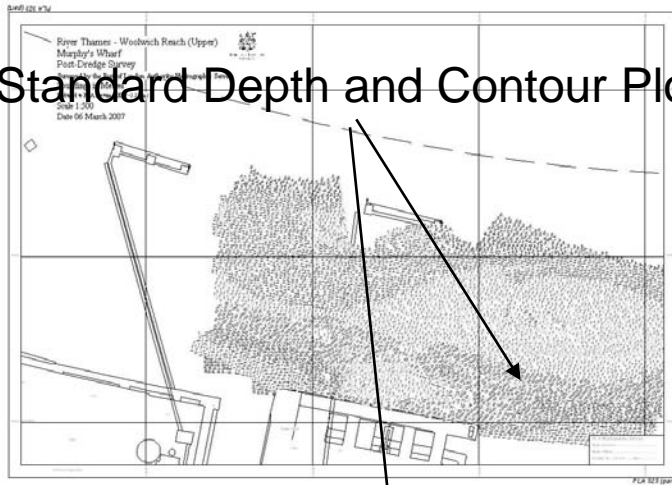




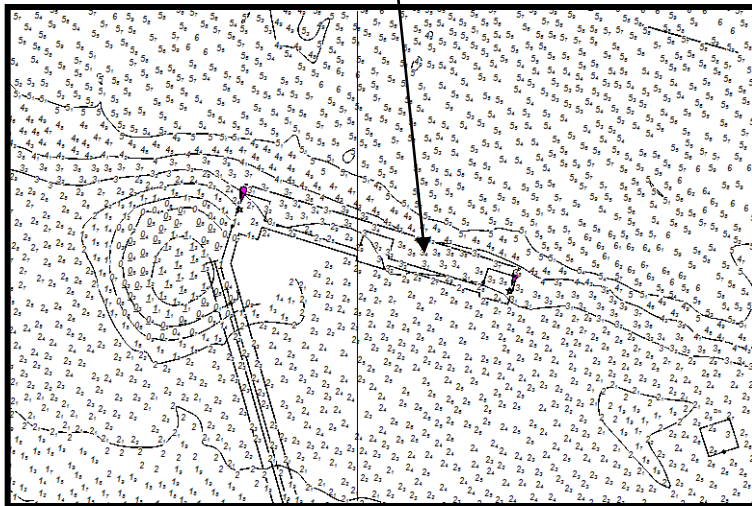


Standard Berth Survey Plot - Shows Depths, Contours and Berth Outline.

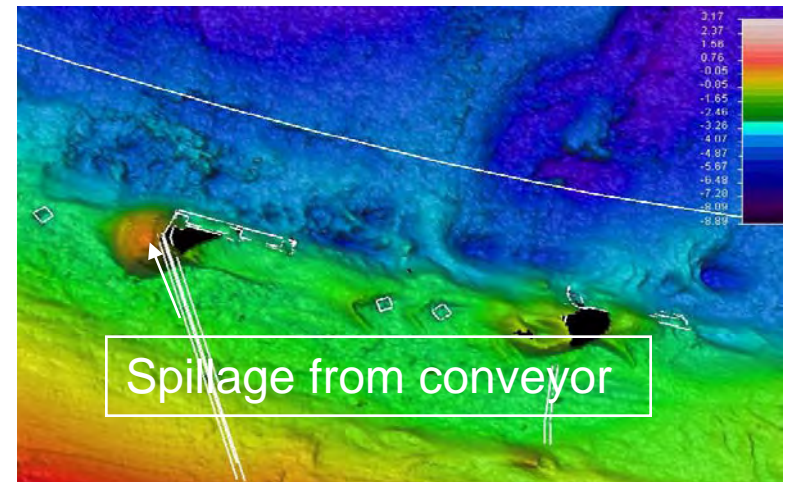
Standard Depth and Contour Plots



Standard Hydrographic Chart



Picture tells a thousand words:-



Tug requirements?



Key measures for compliance (contd)

- Personnel to be competent and qualified
- Key confidence builder for the mariner

Trained personnel



And see that they get recognised..



Key measures for compliance (contd)

- Monitor and review
- Publish plans and performance
- Mariners should be able to access your plans – and how well you've done

General duties

- Public may navigate without risk to life
- Have regard to efficiency and economy
- Improve the infrastructure
- Resource the port properly

- Management of conflicting requirements – e.g. High speed & leisure
- Reasonable charges – but enough to do the job



Exercise specific duties

- Powers to direct
- Manage dangerous vessels and substances

Harbour Master Patrols



Oil spill kit



Exercise Specific duties (contd)

- Provide a pilotage service in the interests of safety
- Highly risky part of berth to berth passage – many mariners can't do it on their own!

Have enough of these – trained
and safe



Pilot Master exchange



Exercise Specific duties (contd)

- Provide and maintain Aids to Navigation

Aids to Navigation



Where next?

- The Guide to Good Practice

Conclusions

- The PMSC is quite onerous
- Surprisingly its only a code
- But it protects the shipowner and the harbour authority from accidents – and costs – and reputation damage
- And if sensibly applied is not unduly restrictive